

MICROFILMED

# PLAT OF SURVEY

PART OF THE NW 1/4 OF SECTION 21, T4N R12E OF THE 4th P.M., FULTON TOWNSHIP, ROCK COUNTY, WISCONSIN

COMMENCING AT AN ALUMINUM MONUMENT AT THE NW CORNER OF SEC 21 T4N R12E; THENCE S89-05-52E (COUNTY PROJECTION) ALONG THE NORTH LINE OF THE NW 1/4 OF SECTION 21 343.00 FT.; THENCE S4-49-33E 53.91 FT. TO A 3/4"x24" REROD FOR THE PLACE OF BEGINNING FOR THE LAND TO BE HEREIN DESCRIBED; THENCE S4-45-14E 132.79 FT. TO A COTTON GIN PIN; THENCE N75-35-10E 457.08 FT. TO A 3/4"x24" REROD; THENCE N37-06-05E 14.88 FT. TO A 3/4"x24" REROD; THENCE N6-01-31W 23.53 FT. TO A 3/4"x18" REROD; THENCE N75-59-13W 71.37 FT. TO A POINT IN THE ROCK RIVER; THENCE S87-33-54W 306.00 FT. TO A POINT IN THE ROCK RIVER; THENCE S76-09-54W 87.78 FT. TO THE POINT OF BEGINNING. CONTAINING 1.04 ACRES (45,309 SQ. FT.)

RECEIVED for filing per  
ss 59.60 (6)

JAN 14 2002

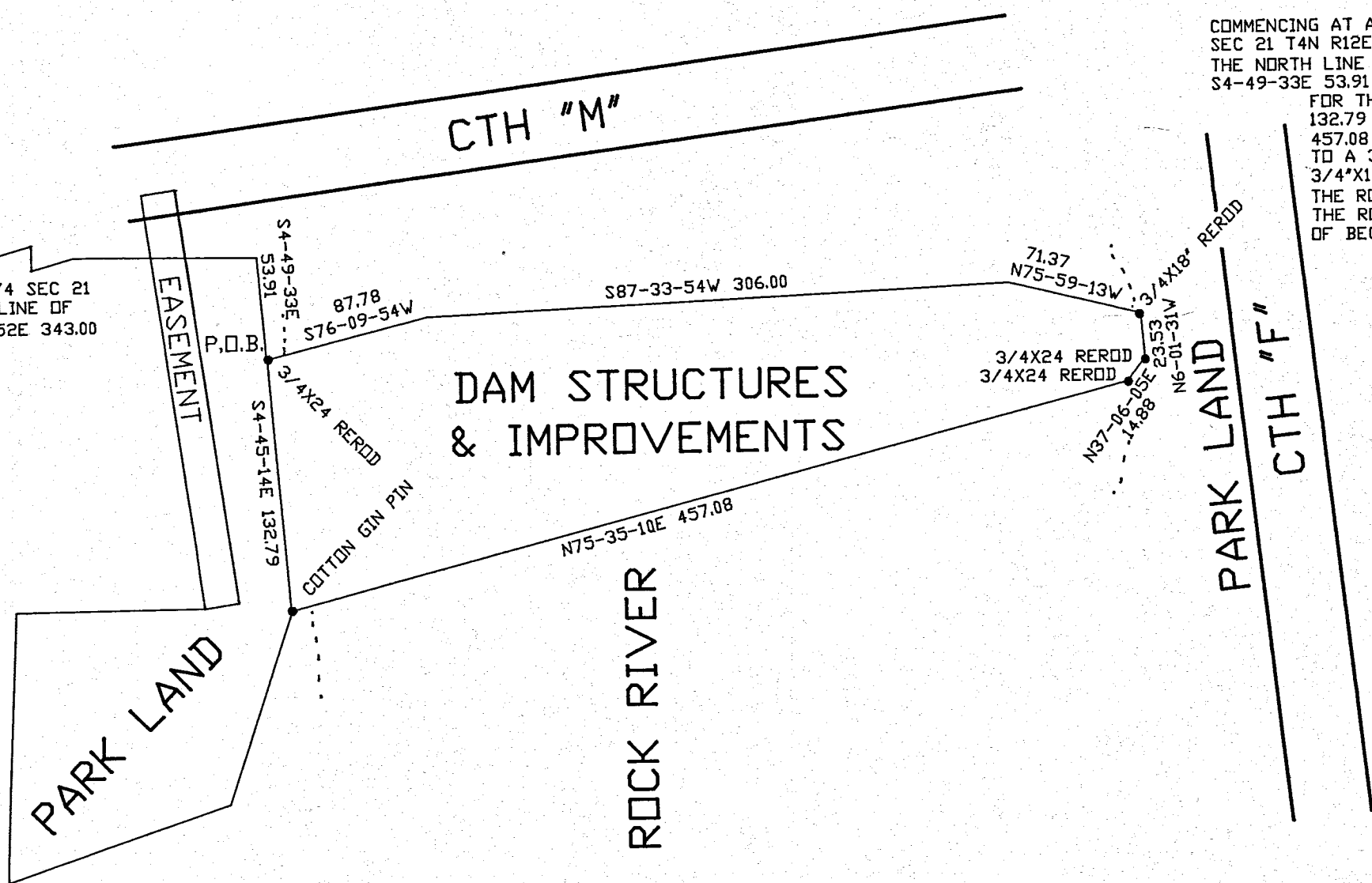
2/3

Map # 14164

STATE OF WISCONSIN  
COUNTY OF ROCK  
Rock County Surveyor

I HEREBY CERTIFY THAT I HAVE SURVEYED AND MAPPED THE LINES AS DESCRIBED AND THE PLAT HEREON REPRESENTS SAID SURVEY AND ITS LOCATION. THIS SURVEY WAS REQUESTED BY THE PARKS DIRECTOR FOR THE PURPOSE OF TRANSFERRING THE DAM STRUCTURES, IMPROVEMENTS, AND LAND.

EMBOSSED SEAL  
*Donald Barnes*  
1/09/2002  
DONALD BARNES, PLS  
COUNTY SURVEYOR



SCALE  
1" = 80 FT.  
0 15 40 80

△  
COUNTY PROJECTION

ROCK COUNTY SURVEYING DEPARTMENT

DATE	01/08/2002
TOWNSHIP	FULTON
SECTION	21
PAGE #	1
OF PAGES	1