

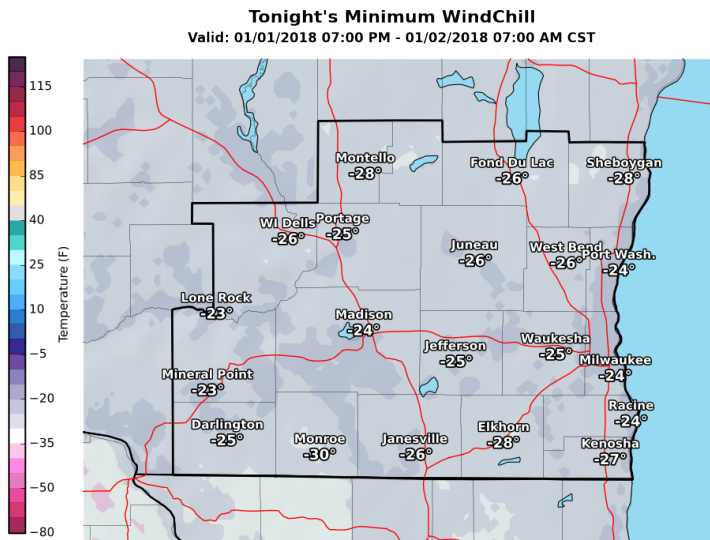
BREAKING Non-stop Madison-San Francisco flights coming in June, officials say



http://host.madison.com/wsj/weather/holiday-week-is-second-coldest-recorded-in-madison/article_91012543-f7b6-57cd-8659-d6350df30045.html

Holiday week is second coldest recorded in Madison

LOGAN WROGE lwroge@madison.com Jan 2, 2018



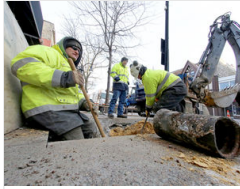
National Weather Service
Milwaukee/Sullivan, Wisconsin
01/01/2018 01:41 PM CST

Follow Us:
weather.gov/milwaukee

Madison recorded the second coldest holiday week this season as cold temperatures nearly edged out a 131-year-old record.

National Weather Service

MORE INFORMATION



Extreme cold weather tied to 3 deaths in Madison area, causes water main breaks

Madison experienced its second-coldest holiday week on record this season, as bitter cold temperatures nearly edged out a 131-year-old record.

The average temperature in Madison from Christmas Day through New Year’s Eve was 1.6 degrees, the National Weather Service said.

That marked the second-coldest holiday week after an average temperature of 1.5 degrees over that period in 1886, according to the weather service.

Milwaukee also reached its No. 2 coldest holiday week with an average temperature of 6.1 degrees.

Dangerously low temperatures and wind look to continue for the next few days. South Central Wisconsin is under a wind chill advisory until noon on Tuesday, as it could feel as low as 25 degrees below zero outside.

The weather service warns that wind chills of around 20 degrees below could happen overnight on Wednesday and Thursday as well.

Despite the recent cold snap, 2017 tied for the 14th warmest year on record in Madison. The average temperature was 48.3 degrees, according to the weather service.

Throughout last year, the city measured 38.28 inches of precipitation and liquid equivalent of snow, which is about 4

inches above the annual normal. But total snowfall for 2017 amounted to about 50 percent of the normal value.

Only 25.3 inches of snow fell on Madison in 2017. That was down 25.6 inches from the normal amount of snowfall annually, according to the weather service.

Logan Wroge | Wisconsin State Journal

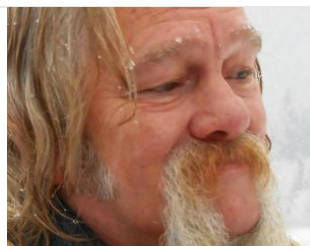
Logan Wroge has been a general assignment reporter for the Wisconsin State Journal since 2015.

FROM THE WEB

Powered By ZergNet



Billy Zane Reveals 'Titanic' Set Secret 20 Years Later



The Truth About the Parents on 'Alaskan Bush People'



Celeb Murder Cases That Captured the World's Attention



The Truth About 'Alaskan Bush People'



The Stunning Transformation of Sofia Vergara



What Every Tom Petty Fan Should Know About the Late Singer