

GazetteXtra



36.5°

| Wednesday, March 23, 2016

Slow, no-wake order issued for Rock River in parts of Rock County

Comments Print

FRANK SCHULTZ
Wednesday, March 23, 2016

JANESVILLE—Boaters in much of Rock County must move so slowly that they create no wake, according to an order from the Rock County Sheriff's Office, issued Wednesday.

A county ordinance requires the slow/no-wake restriction when Rock River water levels exceed 8 feet on Lake Koshkonong and 6.5 feet on the river at Afton.

Gauges on Wednesday showed 8.4 feet on Lake Koshkonong and 7.45 feet at Afton, according to a news release.

Deputies will place slow/no-wake signs at all public access points between the northern Rock County line to the Beloit-Rock Townline Road Bridge, according to the release.

The order is not in effect south of the bridge because the water level there has not exceeded 8.5 feet, according to the release.

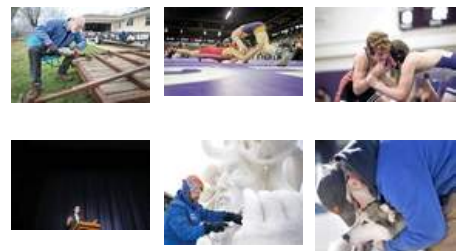
▶ TAKE A LOOK

- **IRS Loophole Allows You To Store Your Gold IRA at Home**
- **John Goodman 100lb Weight Loss- You Won't Even Recognize Him**
- **Melissa McCarthy Wows Ellen Degeneres- Dropping 55lbs in 40 Days**
- **2016's Hottest Diet Trend - Lose 18 lbs in One Month**
- **TMZ Stunned As Melissa McCarthy Tells**

Got a news tip?

[Click here to contact our newsroom](#)

Galleries



Latest News

Xtra Points: Can Badgers keep it rolling?
 Wednesday, March 23, 2016
Press Start: 'Hitman Fnicode 1' Paris'